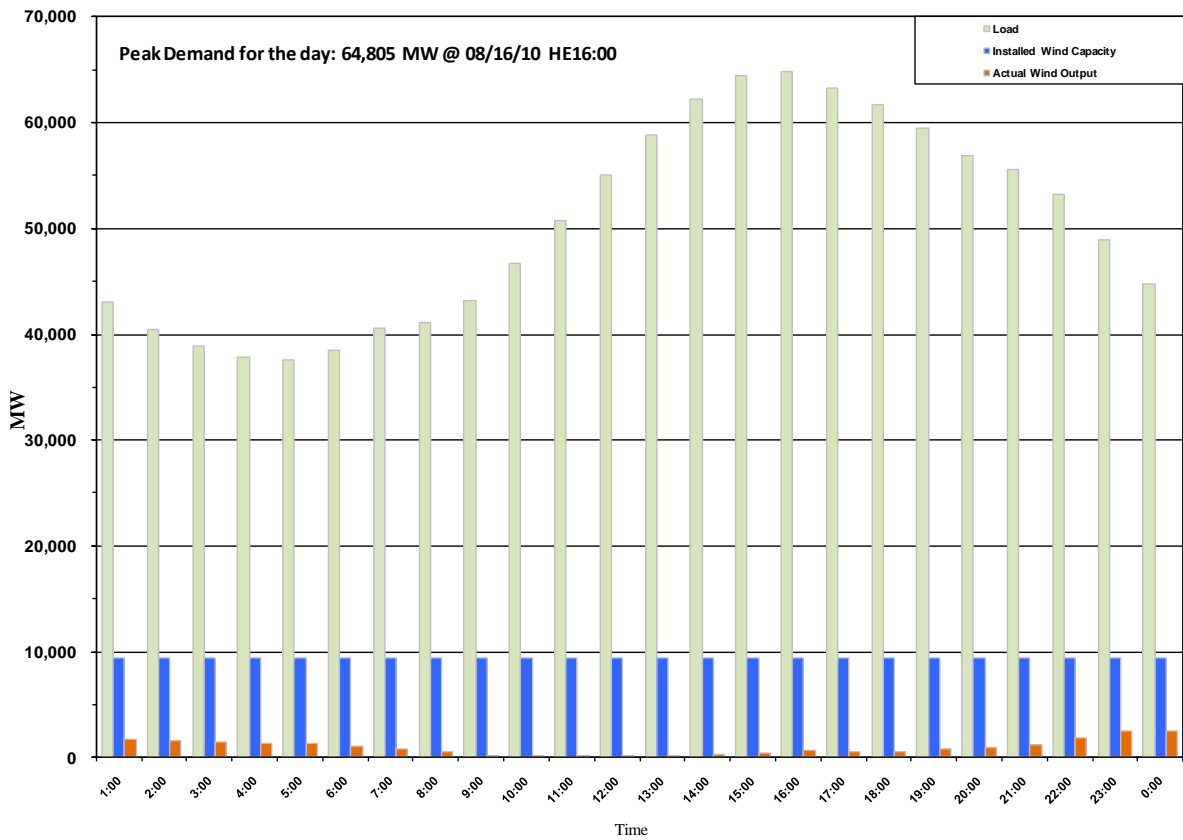




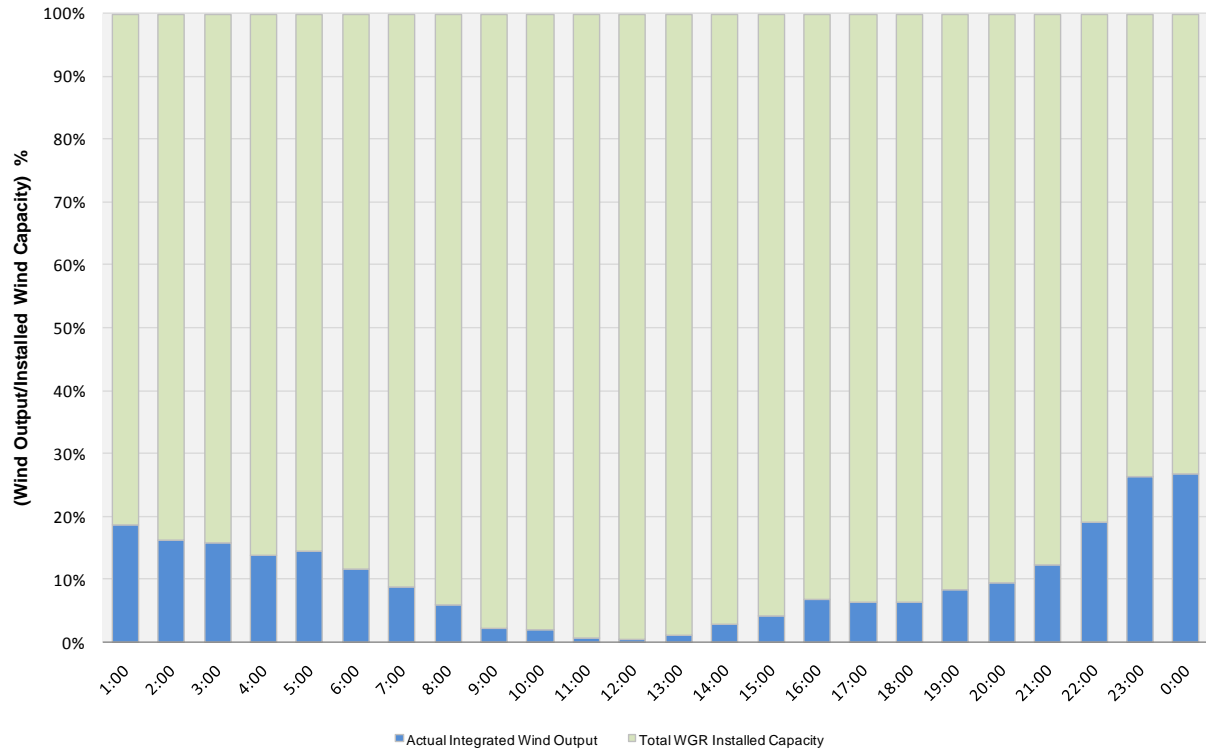
## ERCOT Grid Operations Wind Penetration Report: 08/16/10

Peak Load	<b>64,805 MW</b>
Load Peak Hour	<b>16</b>
Wind Record 06/12/10	<b>7016 MW</b>
Max Wind value	<b>2674 MW</b>
Wind Peak Hour	<b>22:53:44</b>
Wind Penetration %	<b>5.66</b>

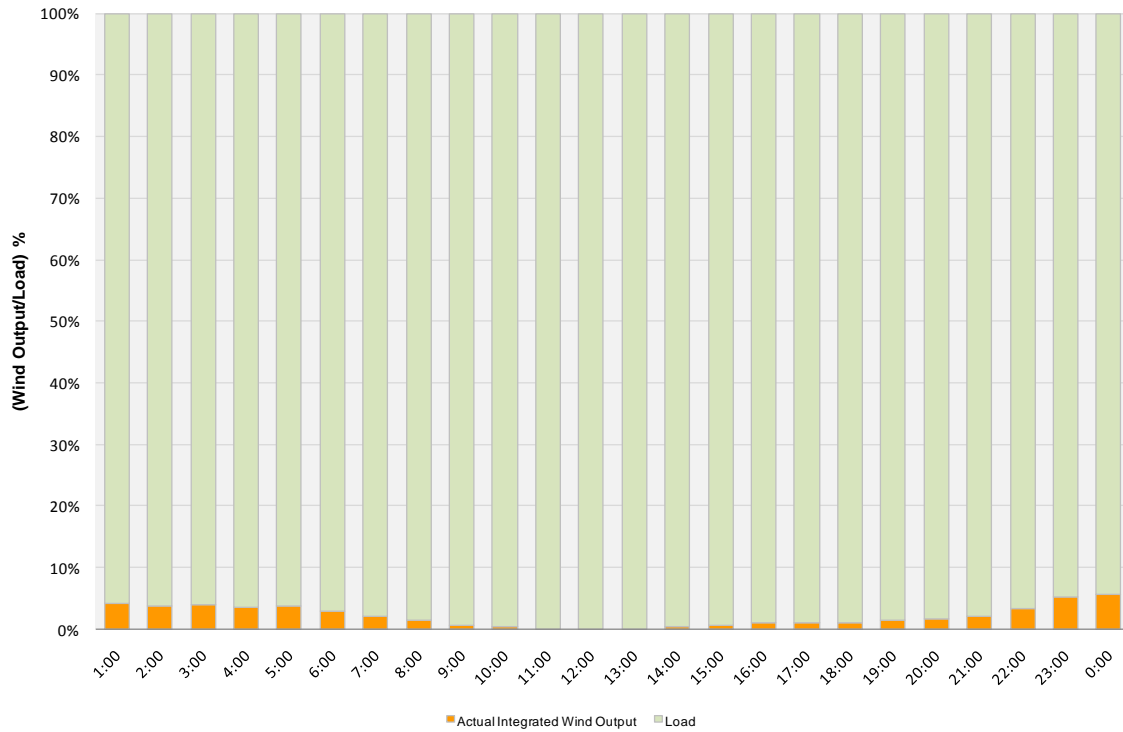




### Actual Wind Output as a Percentage of the Total Installed Wind Capacity 08/16/2010



### Actual Wind Output as a Percentage of the ERCOT Load 08/16/2010





ERCOT Load vs. Actual Wind Output 08/09/10 - 08/16/10

